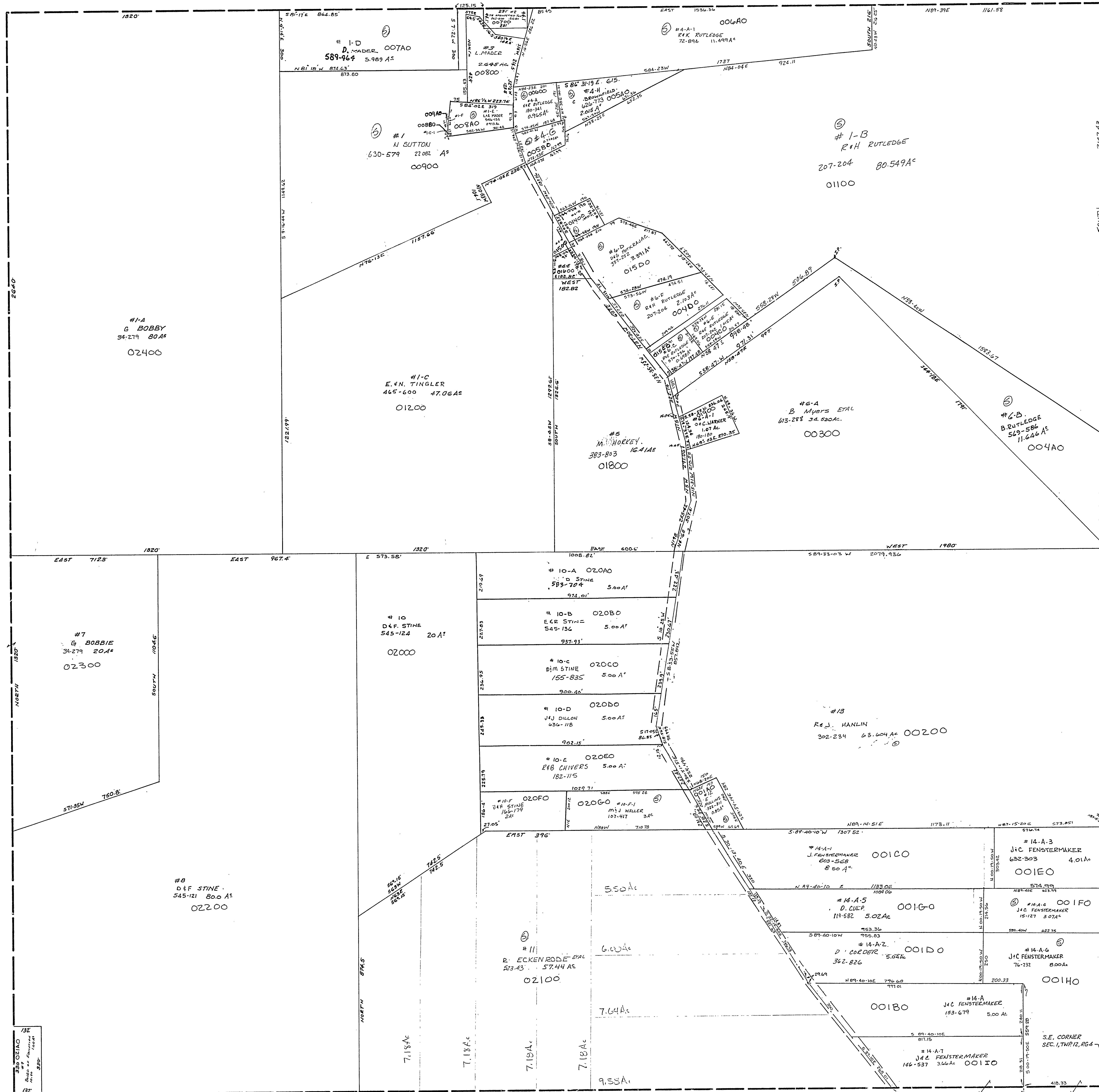
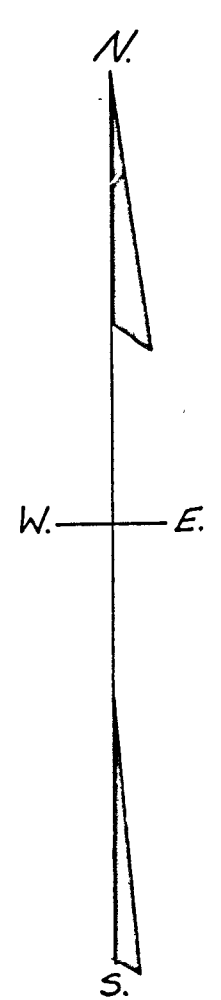


34-0100-

- ① F.F. LIA MAHER 47-965 0.004 A.
- ② F.E. J. SUTTON 81-645 0.004 A.
- ③ G.A.1 F.A.A. WARNER 462-377 0.502 AC.
- ④ E.P. ROBERTSON 429-401 0.87 AC.
- ⑤ E.N. TINGLER 465-600 0.180 AC.
- ⑥ G.A.2 F.A.A. WARNER 462-377 0.534 C.
- ⑦ J.M. MILLER 536-432 0.415 A.
- ⑧ R.A. RUTLEDGE 559-247 0.309 A.
- ⑨ E.N. TINGLER 434-180 0.9 A.
- ⑩ M.M. MANUFACTURERS & TRADERS 602-672 0.7703 A.



CAN NOT LOCATE
34-0100-00500



SPRINGFIELD TWP.
SEC. 1, T. 12, R. 4.
SCALE: 1"=200'